

An architectural rendering of Negley Station, a transit hub. The scene shows a wide, paved platform with a yellow tactile paving strip in the foreground. A modern, low-rise station building with a glass and brick facade is visible in the background. A bus is stopped at a platform. A tall, black, modern street lamp stands on the platform. The background features lush green trees and a clear blue sky with some clouds. The overall atmosphere is bright and modern.

Negley Station Public Update

September 1, 2021

PortAuthority

Housekeeping

- Interpreter instruction
- Closed caption instruction
- Please mute yourself
- Please hold questions until the end
- Submit questions through the chat function



This meeting is being recorded and will be
uploaded to PortAuthority.org/NegleyStation

Welcome!



Station Improvement Program

Phases

- Station Evaluation
- Planning + Design
- **Construction**
- Repeat

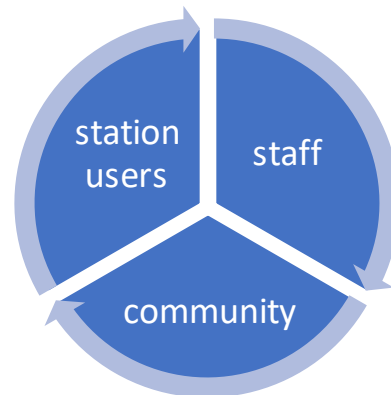
NEGLEY STATION
STATION AREA PLAN

PORT AUTHORITY OF ALLEGHENY COUNTY
PLANNING AND EVALUATION DEPARTMENT

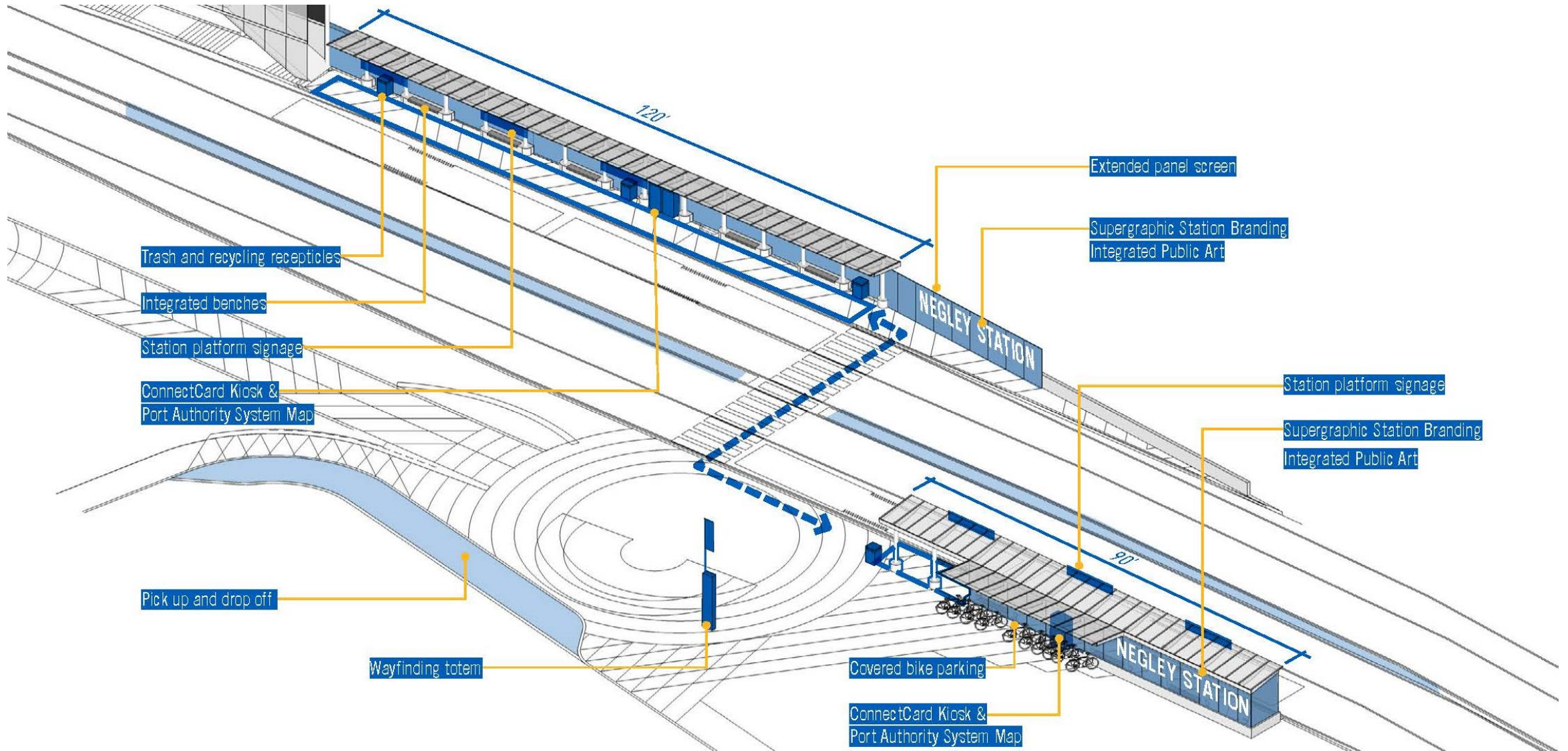
Negley Station User Input — Spring 2017

What would you like to see that would make this station better?

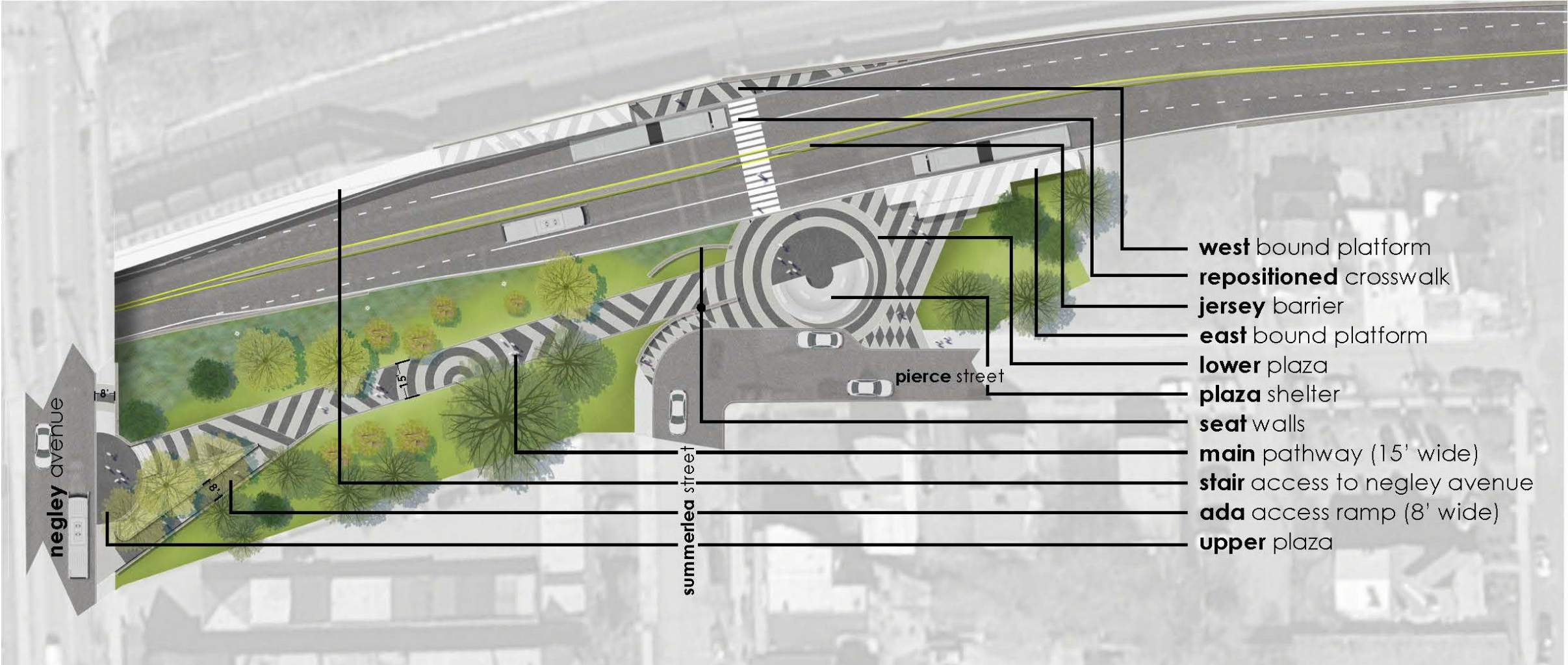
Feature	Count	%
Design (make it look nicer)	64	45.1%
Amenities (benches, shelter, etc)	56	39.4%
Information (maps, signs, etc.)	45	31.7%
Safety	38	26.8%
Pathways and user access (getting to/from the station)	25	17.6%
Crossing guideway difficult	8	5.6%
Bike Amenities (racks, stair runners, etc.)	5	3.5%
Service Related	5	3.5%



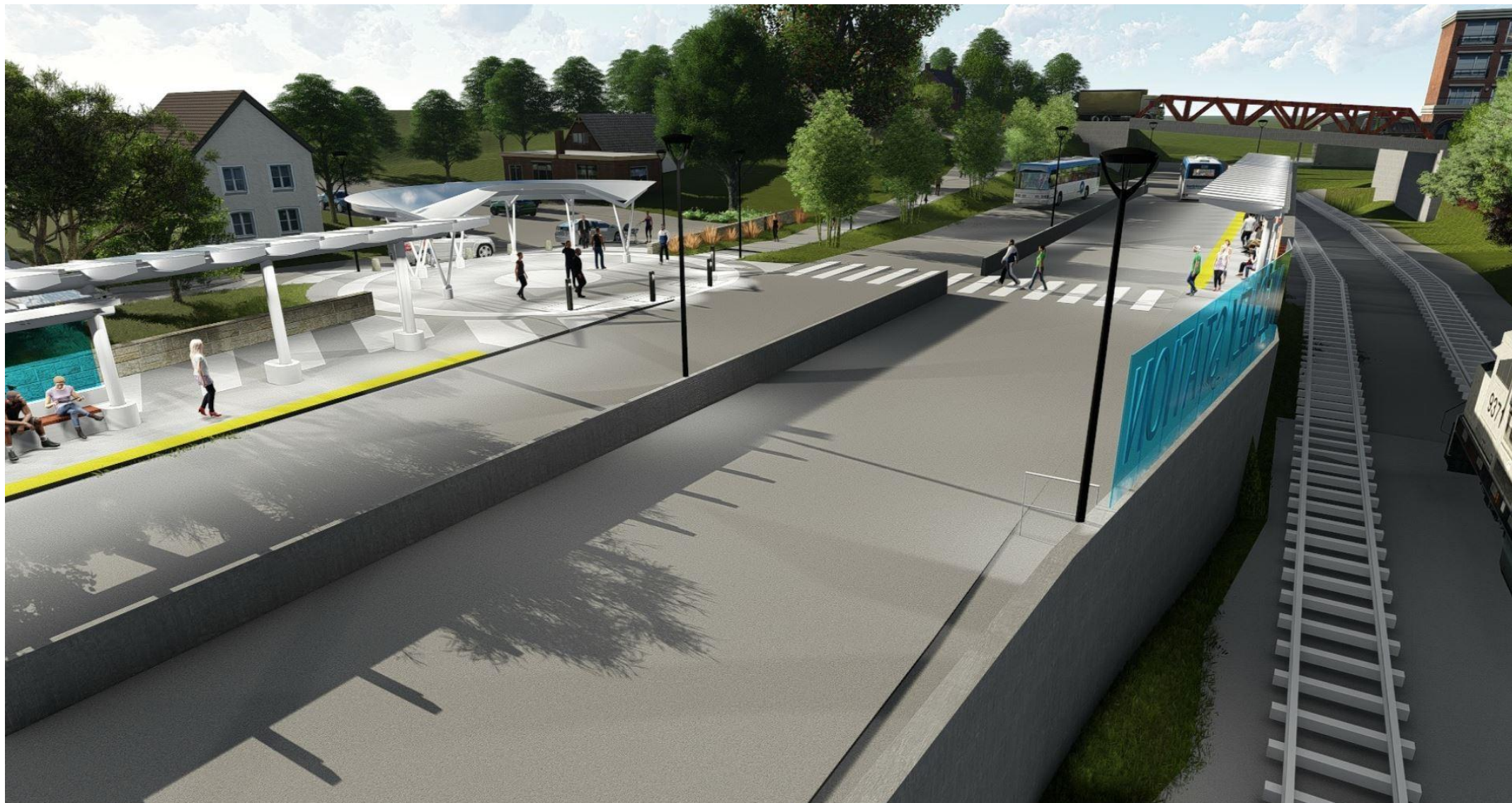
Station Design Concept — 2018



Station Design Concept — 2018



Final Design — Station View



Final Design — Inbound View



Final Design — Outbound View



Final Design — Entrance from South Negley Ave.



Final Design — View Towards Summerlea St. Entrance





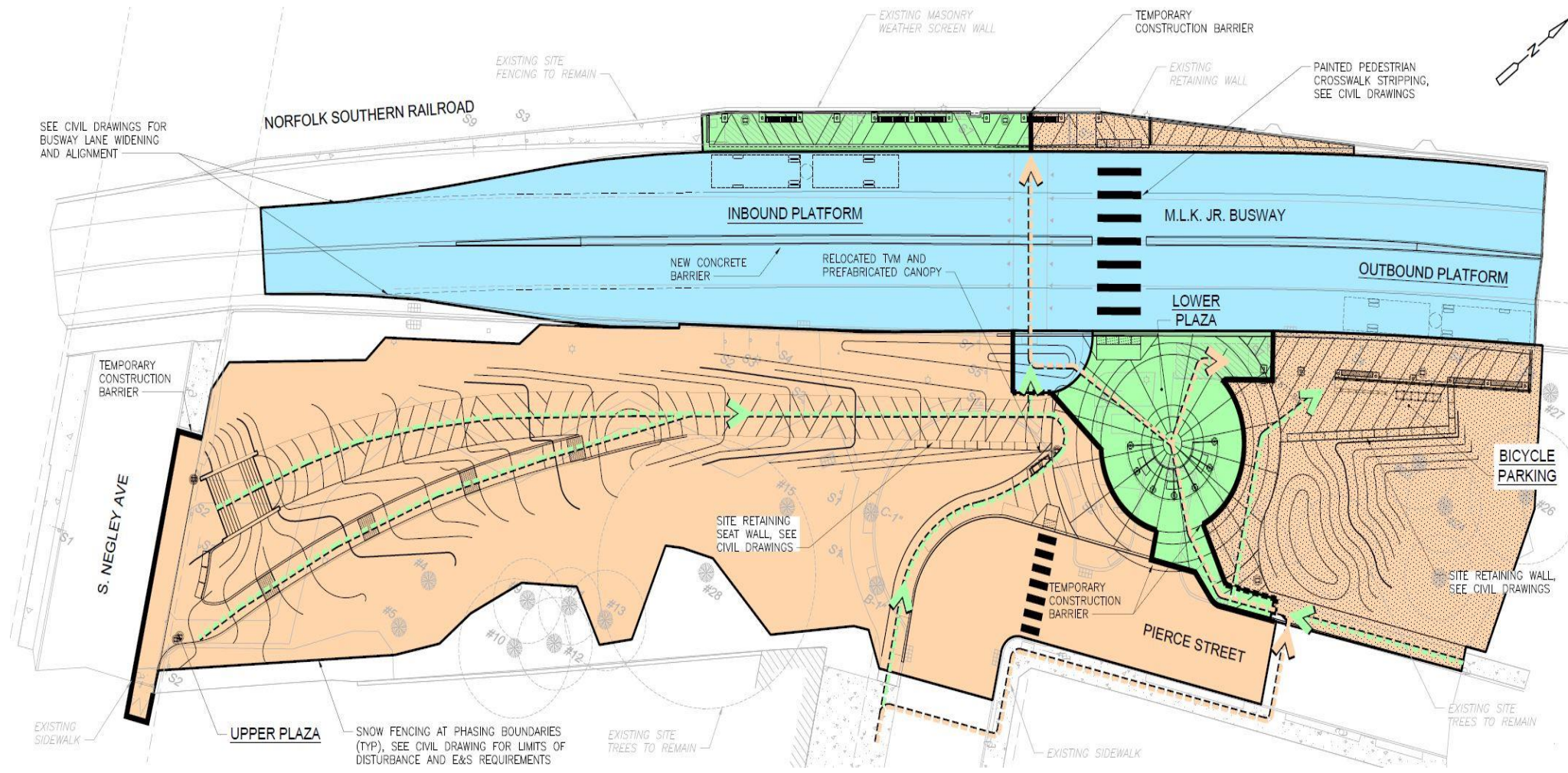
Construction

- Construction will occur over three phases and will last for approximately one year from the start date.
- Most work will occur during daylight hours of approximately 6am-5pm, Monday-Friday.
- Dates for construction will be determined once legal agreements with Pittsburgh Water and Sewer Authority (PWSA) are finalized.
- The construction start date will be communicated to the public and posted on our project website: PortAuthority.org/NegleyStation.
- A letter will also be sent to nearby residents.



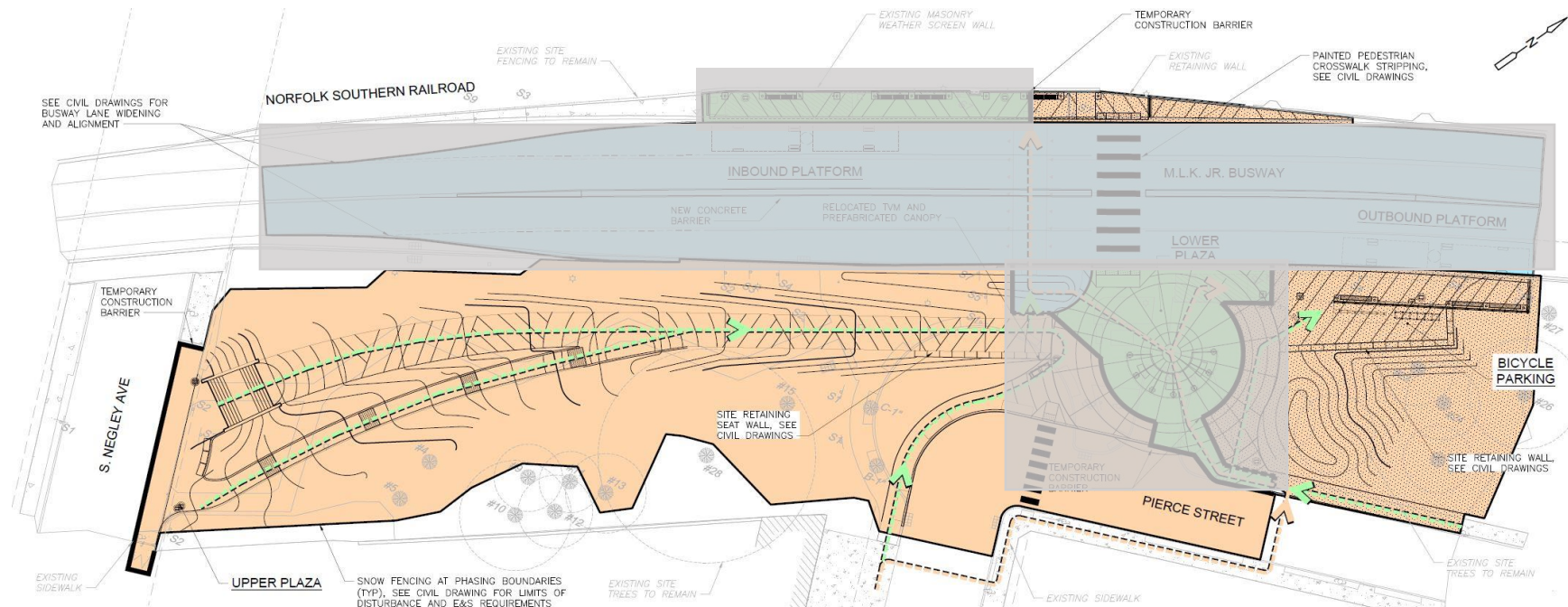
Construction Phases

- Phase 1
- Phase 2
- Phase 3





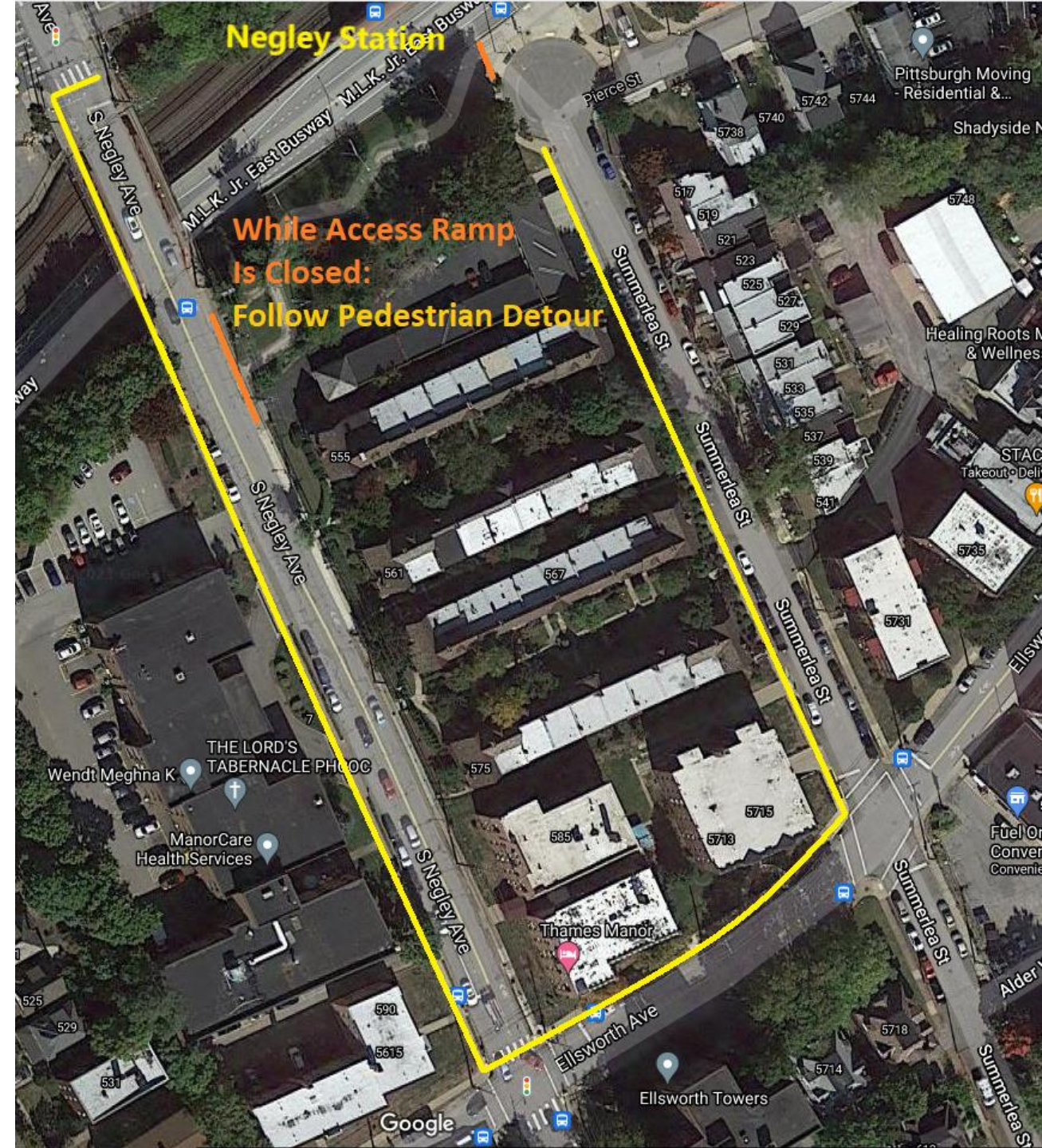
Phase 1



- Complete the accessible ramp and stairs from South Negley Ave.
- Due to construction on the South Negley entrance, the station will have no direct access to or from South Negley Ave. during this phase.
- A pedestrian detour via Ellsworth Ave. and Summerlea St. will be provided on the next slide.
- Sidewalk closures on South Negley Ave. will affect all pedestrian traffic, not just riders.
- Signage will be provided to instruct pedestrians how to enter the station.
- Phase 1 represents approximately 55% of the work on the station.

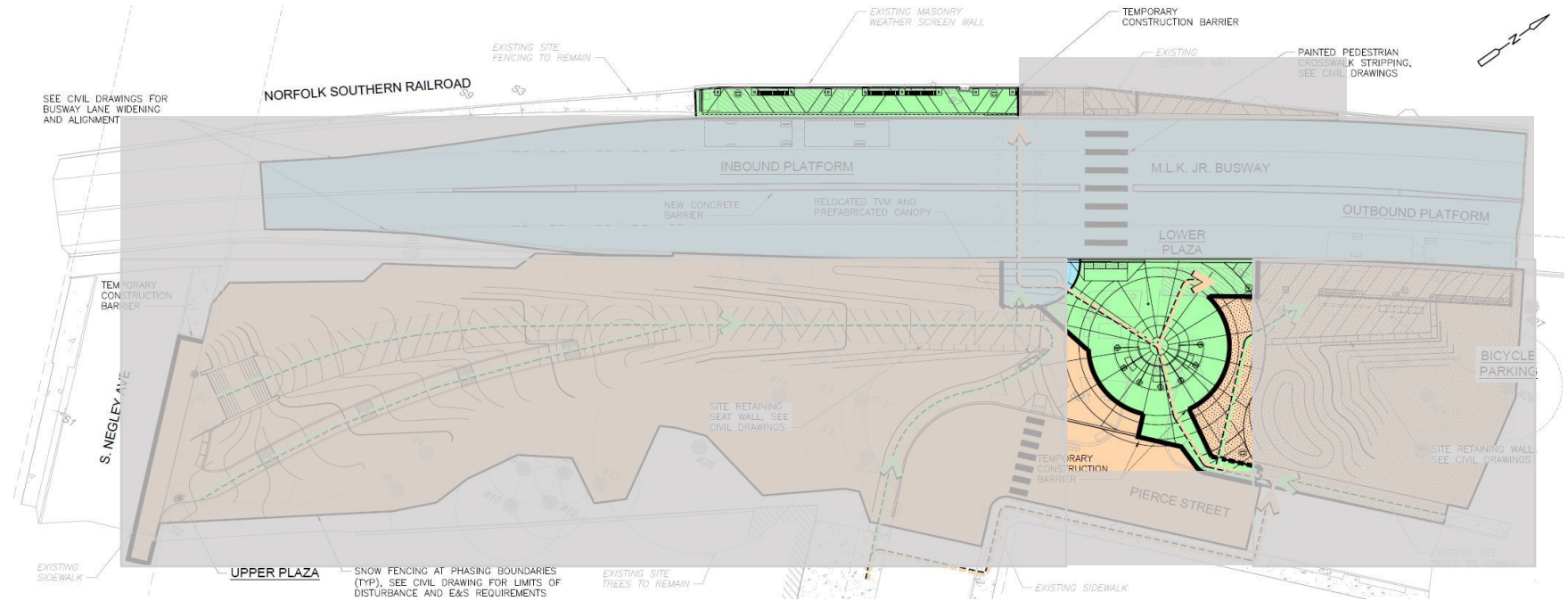
Phase 1 Pedestrian Detour

- Riders who typically enter the station from South Negley Ave. will proceed down South Negley towards Ellsworth Ave., make a left on Ellsworth, and a left on Summerlea St. to enter the station.
- Additional travel time will be needed.





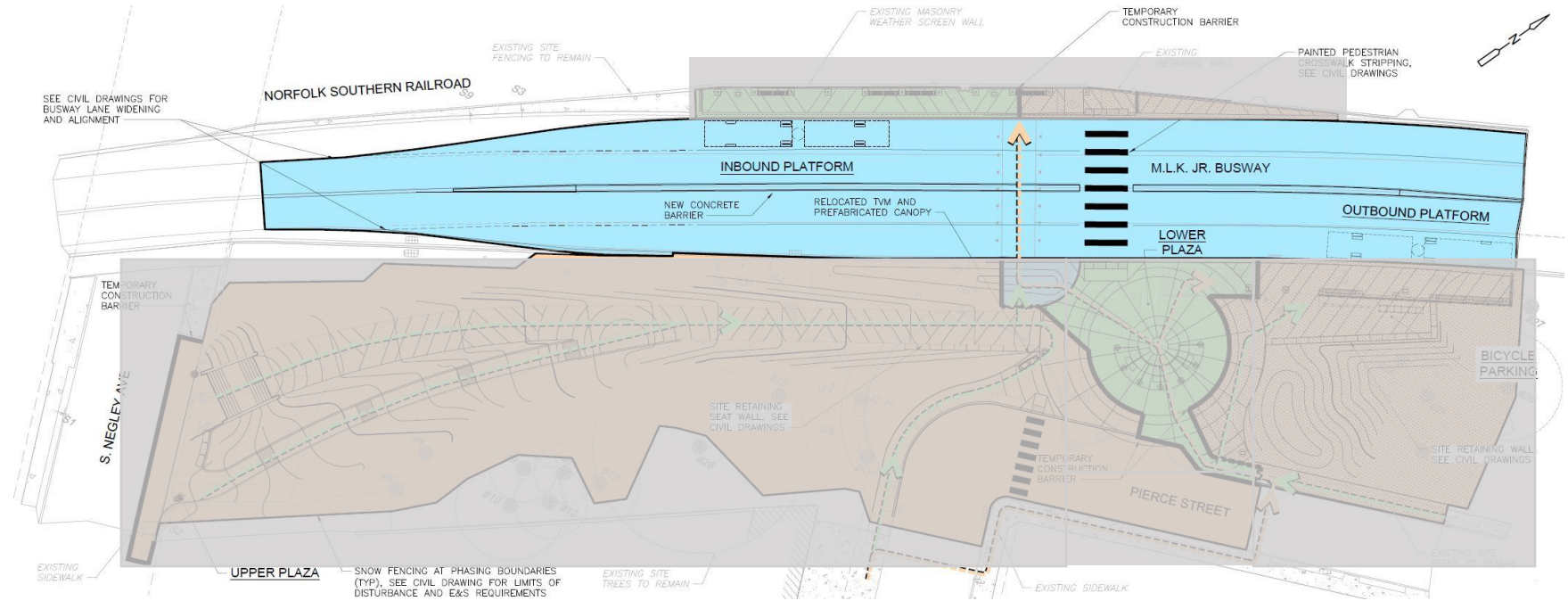
Phase 2



- This phase of work will focus on the Summerlea entrance, and the inbound and outbound platforms.
- Access from South Negley Ave. will be restored during this phase.
- The lower plaza near Summerlea St. will be shut down. Riders will still be able to enter and exit from Summerlea St.
- There will be no cover on the inbound or outbound platforms during part of this phase.
- Phase 2 represents approximately 35% of the work on the station.



Phase 3



- This last phase of work will focus on the busway, including the addition of the concrete jersey barrier, the installation of new lighting, and milling and paving.
- Access from South Negley Ave. will continue to remain available during this phase.
- Milling and paving work on the busway will require overnight and weekend work.
 - Expected to occur over two extended weekends to minimize impacts and delays.
- During weekend work, Negley Station will shut down. Buses that serve the station will detour and serve nearby established stops on Ellsworth Ave. and Summerlea St.
- Phase 3 represents approximately 10% of the work on the station.

Rider Impacts: What to Expect

Rider impacts at the station are anticipated to be minimal.

Outbound buses will continue to serve the outbound platform, and inbound buses will continue to serve the inbound platform.

Stop locations may shift slightly depending on platform construction.

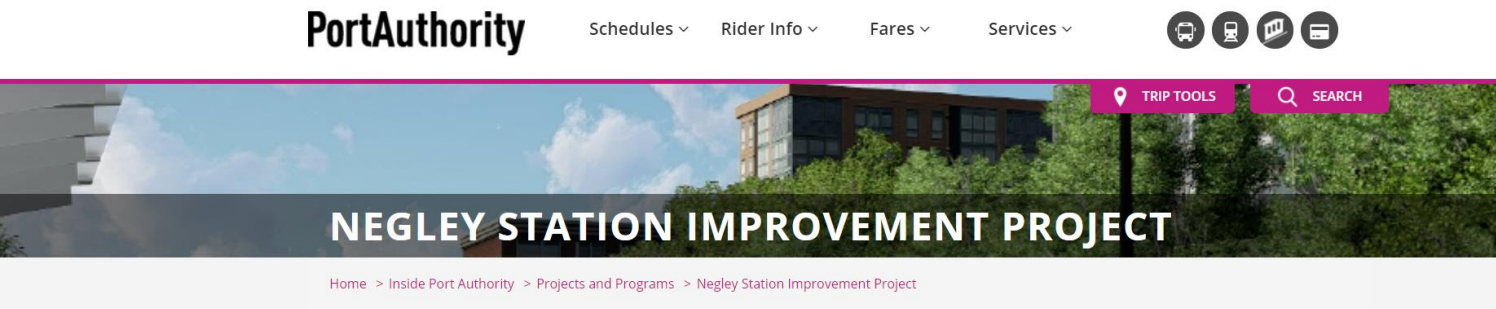
Signage will be placed at the station to inform riders where to board, and when this will be occurring.

Residential Impacts: What to Expect

Throughout the project, the contractor may require a street closure, lane or parking restrictions on Summerlea St. between Ellsworth Ave. and Pierce St., and Pierce St. between Summerlea St. and Maryland Ave.

- Once construction starts, those impacted will receive advance notice of any street closure, lane or parking restriction.
- Lane or street closures will occur for less than 12 hours at a time. The contractor will restore street access at the end of each work period.
- A dedicated Customer Service phone number will be provided for questions related to construction.

Project Website: PortAuthority.org/NegleyStation



Negley Station on Port Authority's East Busway will be the first station in our **Station Improvement Program** to undergo construction in 2021. Check back with this page for the latest project updates, from the construction timeline to rider impacts and detours.

Upcoming Events

Join us for a virtual presentation of the final station design and to learn more about upcoming construction.

Wednesday, September 1, 2021 from 6-7PM (online)

Please register in advance:

[Click Here to Register](#)

Project Overview

The Negley Station Improvement Project is part of our Station Improvement Program. This program is aimed at investing capital resources into existing stations along our East and West Busways and Red, Blue and Silver light rail transit lines to increase ridership and encourage more equitable transit-oriented development. Stations were prioritized based on a **detailed evaluation** of factors contributing to transit-oriented development, and Negley Station rated as one of the high priority locations.

Projects and Programs

- Negley Station Improvement Project
- South Hills Junction Station Improvement Project
- Station Square Station Improvement Project
- Dormont Junction Station Improvement Project
- Mt. Lebanon Tunnel Ventilation Project
- Belasco Station Project
- Bus Shelter Program
- Carnegie Station Improvement Project
- Transit-Oriented Communities
- Bus Stop Consolidation

Thank you!

Questions and
Comments?



PortAuthority

TOD Recommendations

