

Five Year Light Rail Investment Program

Semiannual Update

Engineering, Scheduling, and Special Services Departments

November 2024

Investment Program Refresh



STAGE 1

2022-2025

- ☐ CBD Plinth Replacement
2022 - 2025
- ✓ Light Rail Station Improvements
- ✓ Mt. Lebanon Tunnel Fan Replacement

STAGE 2

2024

- ✓ Red Line Project Bundling
 - ✓ Guarded Rail Replacement
- ✓ Neeld & Traymore Ave Crossover Switch Tie Replacements
- ✓ Kelton Street Stabilization

STAGE 3

2025-2026

- ☐ Mt. Washington Transit Tunnel Rail Replacement – 2025
- ☐ Belasco High Platform Station - 2025
- ☐ Mt Lebanon Tunnel Rail Replacement - 2025-2026

STAGE 4

2026-2028

- ☐ Panhandle Bridge (Light Rail) Rehabilitation - 2026 – 2028
- ☐ Station Square and Dormont Station Improvement Projects – 2026-2027

Accomplishments – Progress Completed in 2024

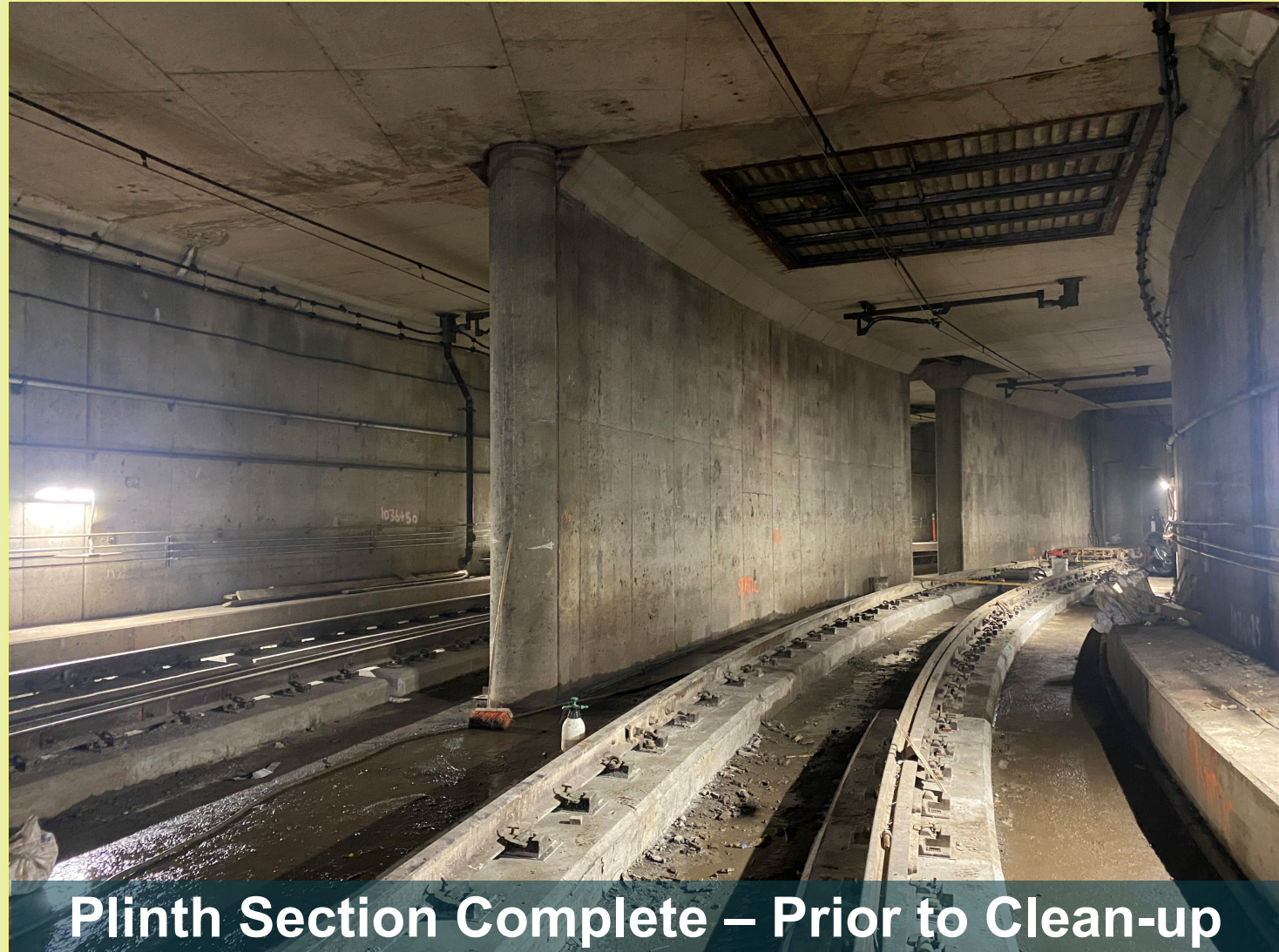
Central Business District (CBD) Plinth Replacement Project

- ✓ CBD Plinth Replacement
 - ✓ 2024 Two-Month Closure

\$35 million

- ✓ Red Line Project Bundling – Summer Red Line Closure
 - ✓ Guarded Rail Replacement
 - ✓ Neeld & Traymore Ave Crossover Switch Tie Replacements
 - ✓ Kelton Street Stabilization

\$20 million



Plinth Section Complete – Prior to Clean-up

Red Line Closure Projects



*Willow Ave Grade Crossing
Before*



*Willow Ave Grade Crossing
After*

Station and Tunnel Improvements

- ✓ Light Rail Station Improvements
 - ✓ 18 Stations
 - ✓ \$16 million
- ✓ Mt. Lebanon Tunnel Fan Replacement
 - ✓ \$10 million



LRT Station Improvements

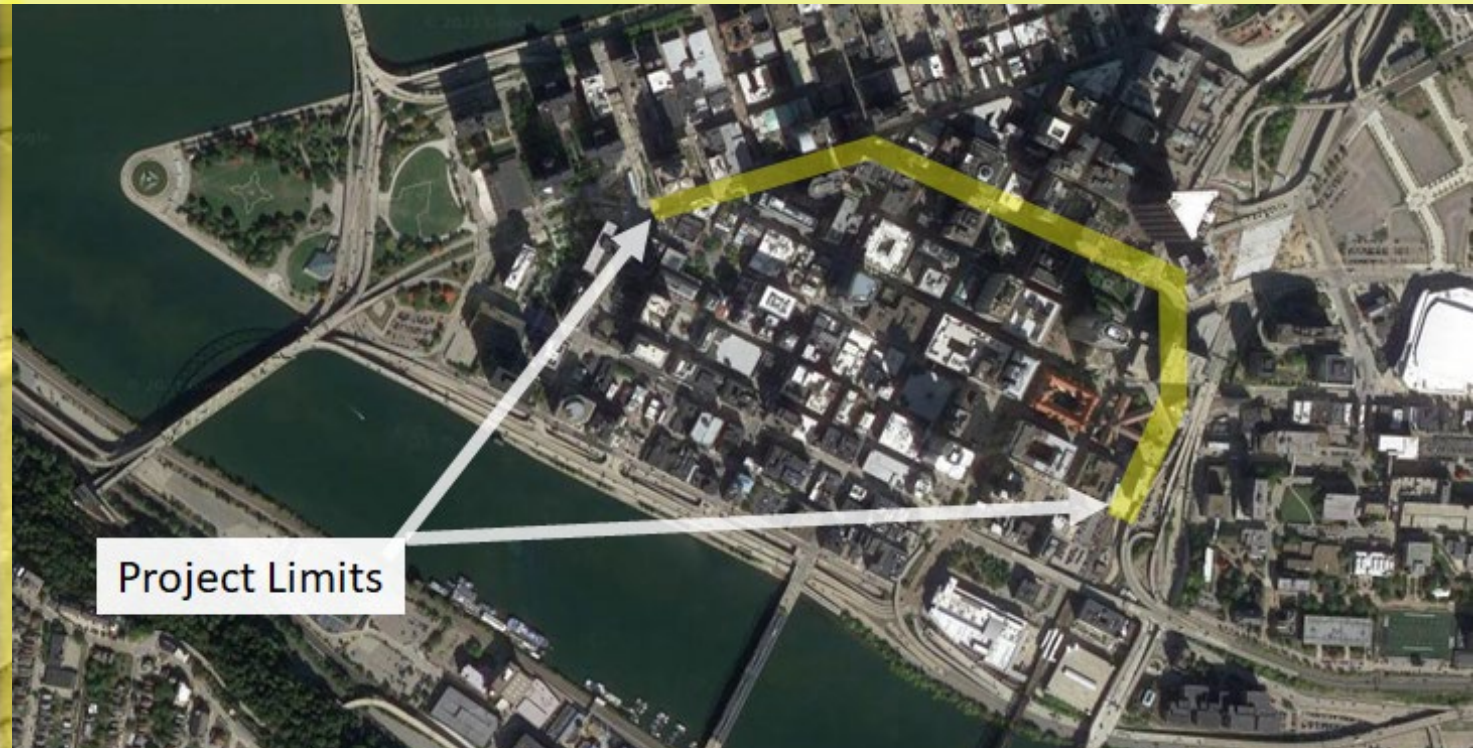
Upcoming Rail Projects in 2025

Completion of CBD Plinth Replacement Project

- ❑ 2025 Two-Month Closure (January & February 2025)
- ❑ \$35 million



Existing Condition



CBD Plinth Project Area

Mt. Washington Tunnel Rail Replacement

- ❑ 2025 Eight-Month Closure
(Feb 23rd through October 2025)
- ❑ \$26 million

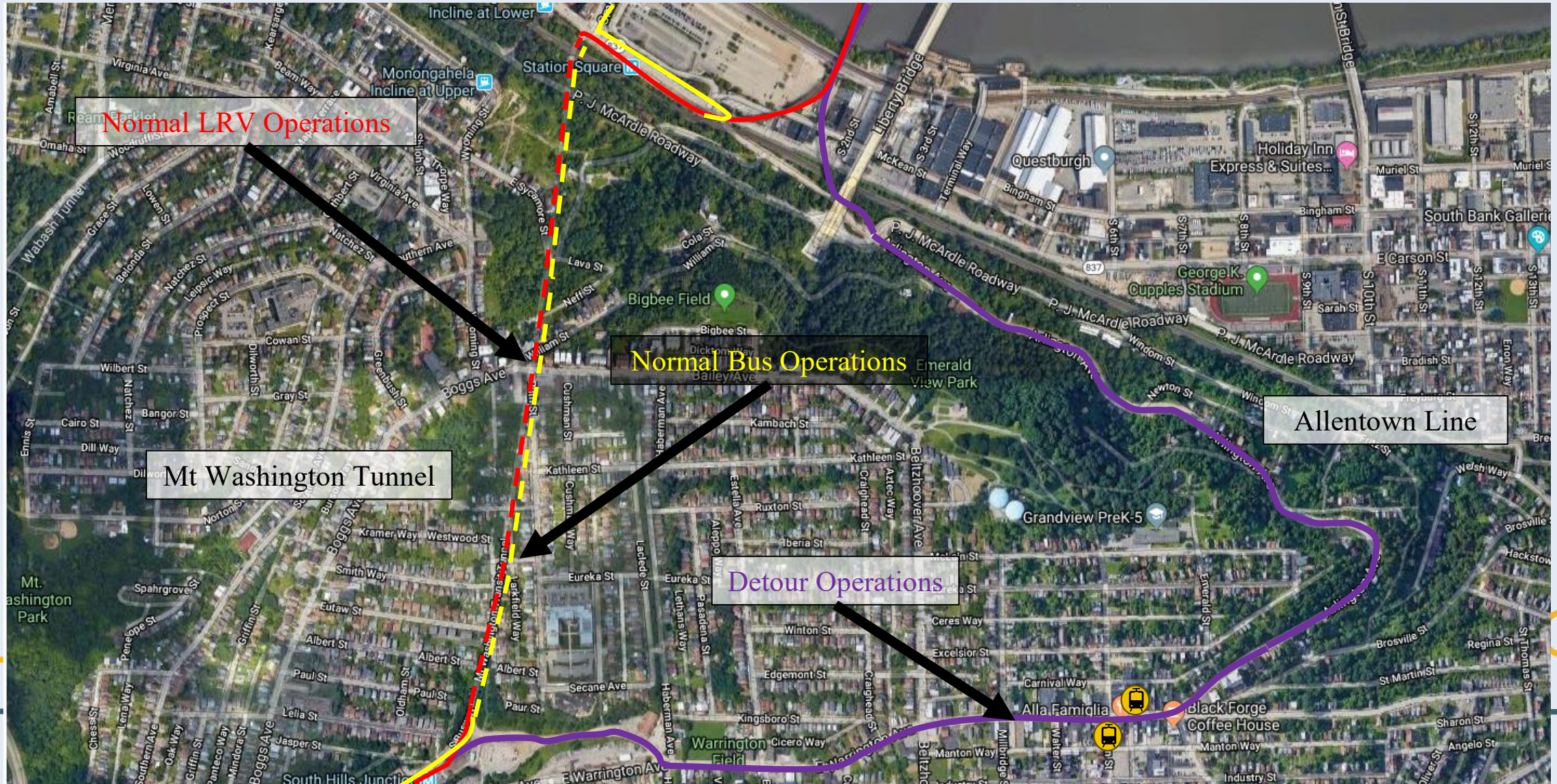
Scope:

- ❑ Embedded Track Replacement
- ❑ Overhead Catenary Wire and Support Component Replacement
- ❑ Concrete Pavement Replacement
- ❑ Electrical Duct Banks Repairs
- ❑ Tunnel Drainage Replacement
- ❑ Tunnel Liner Shotcrete Repairs



Mt. Washington Tunnel

Mt. Washington Tunnel Rail Replacement – Light rail detour

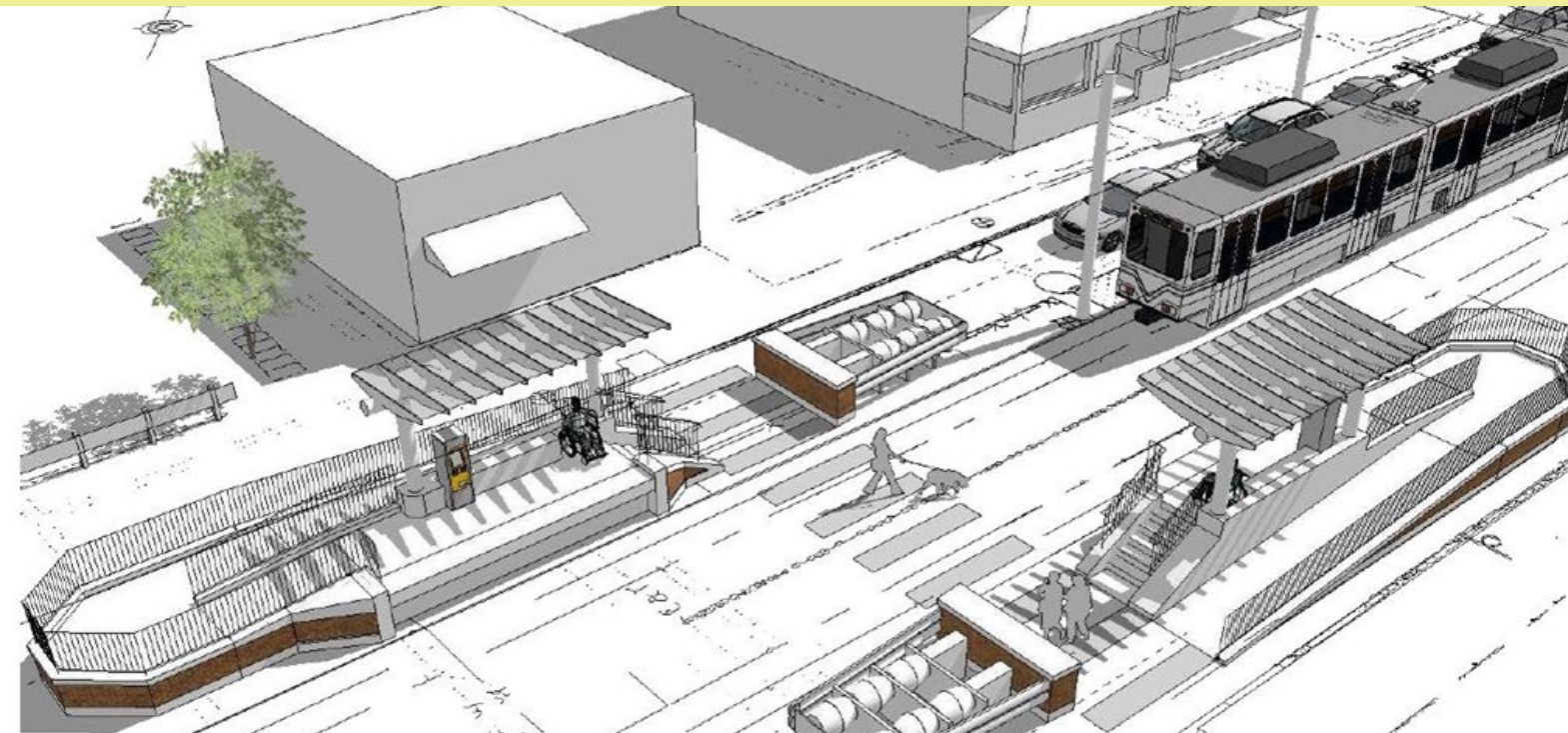


Belasco High Platform Station Project 2025-2026

- ❑ In design, \$7 million
- ❑ 1 Weekend Closure
- ❑ 11 Weekends of Single Track

❑ Scope:

- ❑ Mini-highblock Station
- ❑ Drilled Micro-pile Foundation w/ Concrete Grade Beam
- ❑ ADA Access Ramp
- ❑ Steel and Glass Canopy with Windscreen
- ❑ Station Lighting
- ❑ Passenger Amenities
- ❑ Stainless Steel Railings
- ❑ Pavement Markings & Signage
- ❑ Pavement and Sidewalk Restoration
- ❑ Architecturally finished station walls



Belasco Station Rendering

Mt. Lebanon Tunnel Rail Replacement (2025-2026)

Single Track each Tunnel

In Design

\$26 million



Outside Mt Lebanon Tunnel



Mt Lebanon Tunnel

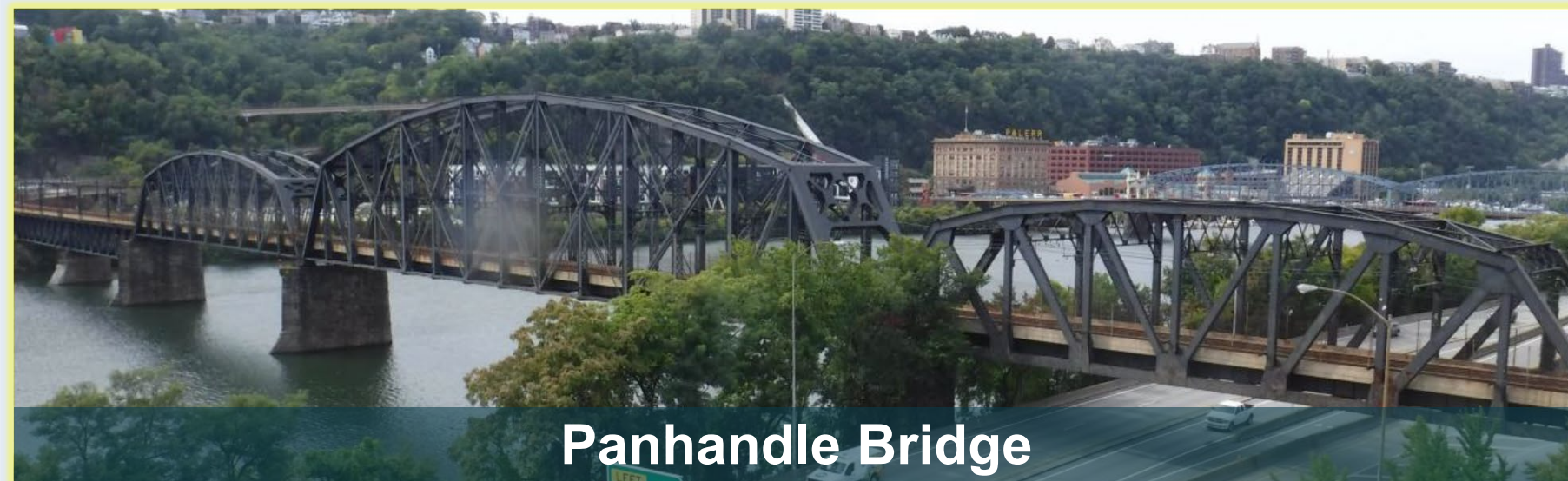
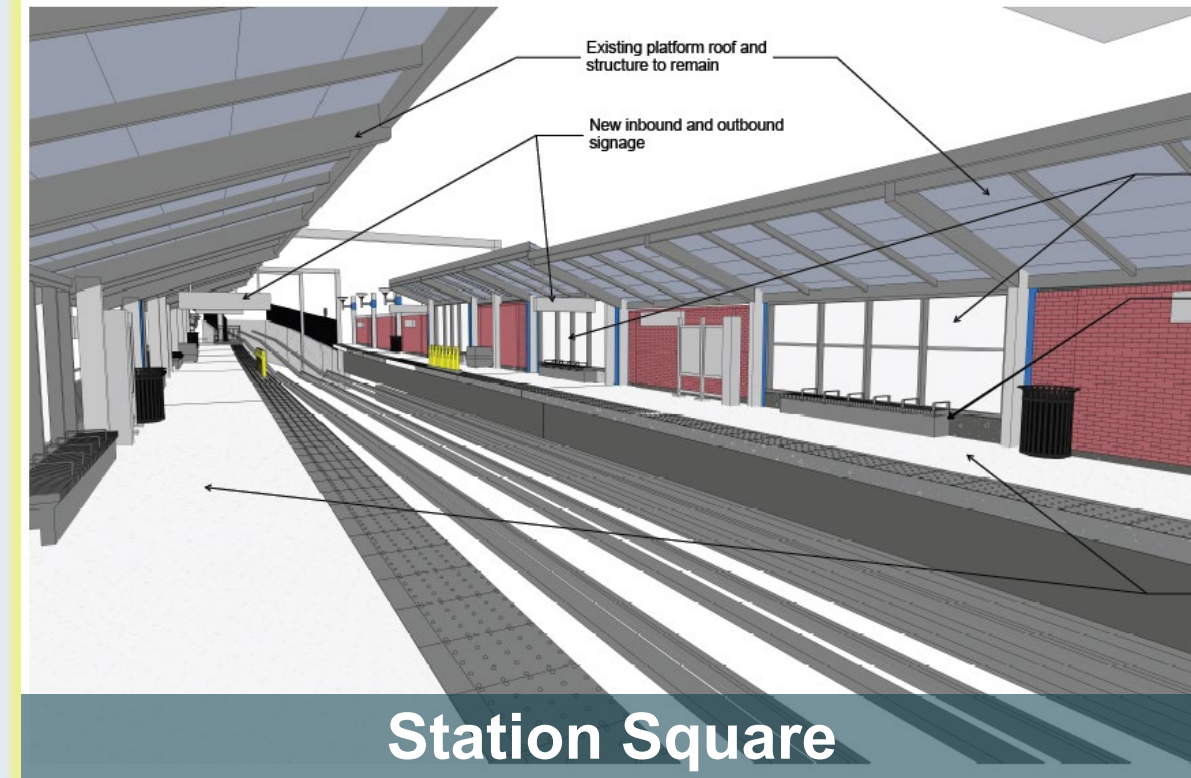
Projects Beyond 2025

❑ Panhandle Bridge (Light Rail) Rehabilitation – 2026 – 2028

- ❑ In design
- ❑ \$65 million

❑ Station Square and Dormont Station Improvement Projects – 2026-2027

- ❑ In design
- ❑ \$16 million



Service Impacts – January-March 2025 Downtown Plinth Project



Service Impacts – Phase A

Phase A – January 2 – February

- Work Focused Under Both Switches on Approach at Steel Plaza Station
- Scheduled Regular Rail Service Terminates at First Avenue Station
- Temporary "Rail Shuttle" Bus Bridge Between First Avenue & Steel Plaza Stations
- Temporary "Subway Local" Rail Bridge Between Allegheny & Steel Plaza Stations



P Pittsburgh
R Regional
T Transit



Service Impacts – Phase B

Phase B - February - March

- Plinth Work Completion Under Rail In Main Line Subway
- Scheduled Regular Rail Service Detours To & From Penn Station
- Temporary "96R-Penn-Gateway" Bus Bridge Between Penn, Wood Street & Gateway Stations
- Temporary "Subway Local" Rail Bridge Between Allegheny, North Side & Gateway Stations



P Pittsburgh
R Regional
T Transit



Service Impacts – Mt. Washington Transit Tunnel Closure Project

- Approximately 7-8 minutes additional travel time in each direction
- Silver will operate between Washington Junction and Library on weekdays
 - Full route on weekends



Allen Street Temporary Light Rail Stops



This pair of temporary light rail stops is not ADA compliant. Riders needing the level boarding should continue to use the 43-Bailey or 48-Arlington bus routes, which will continue to serve these stops in Allentown.

Route 39: Brookline

➡ Inbound

➡ Outbound

Tunnels

▨ Mt. Washington Tunnel Project

— Road Tunnels

PRT Busways

— East Busway

— South Busway

Areas of Interest

— Parks

P Pittsburgh
R Regional
T Transit



Pittsburgh Regional Transit



Route 40: Mt. Washington

➡ Inbound

➡ Outbound

Tunnels

▨ Mt. Washington Tunnel Project

▬ Road Tunnels

PRT Busways

▬ East Busway

▬ South Busway

Areas of Interest

▬ Parks

P Pittsburgh
R Regional
T Transit



Pittsburgh Regional Transit



PSU Office of Physical Plant, data.pa.gov, Esri, TomTom, Garmin, SafeGraph, GeoTechnologies, Inc, METI/NASA, USGS, EPA, NPS, US Census Bureau, USDA, USFWS, Maxar

Route 41: Bower Hill

- Inbound
- Outbound
- Tunnels
 - Mt. Washington Tunnel Project
 - Road Tunnels
- PRT Busways
 - East Busway
 - South Busway
- Areas of Interest
 - Parks

Pittsburgh
Regional
Transit



Pittsburgh Regional Transit



PSU Office of Physical Plant, data.pa.gov, Esri, TomTom, Garmin, SafeGraph, GeoTechnologies, Inc, METI/NASA, USGS, EPA, NPS, US Census Bureau, USDA, USFWS, Maxar

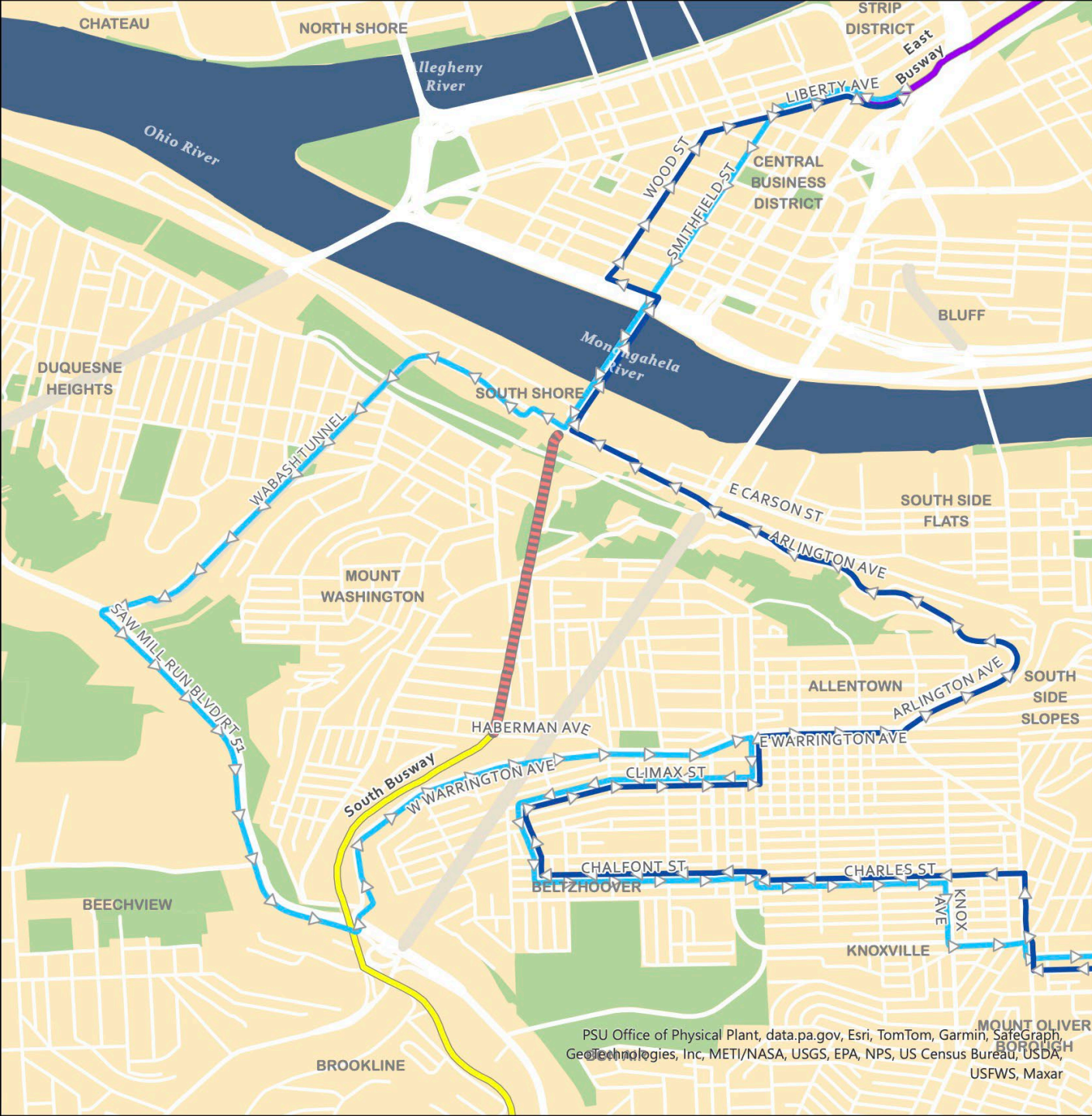
Route 44: Knoxville

- Inbound
- Outbound
- Tunnels
 - Mt. Washington Tunnel Project
 - Road Tunnels
- PRT Busways
 - East Busway
 - South Busway
- Areas of Interest
 - Parks

Pittsburgh
Regional
Transit



Pittsburgh Regional Transit



PSU Office of Physical Plant, data.pa.gov, Esri, TomTom, Garmin, SafeGraph, GeoTechnologies, Inc, METI/NASA, USGS, EPA, NPS, US Census Bureau, USDA, USFWS, Maxar

51L: Carrick Limited

▶ Inbound

▶ Outbound

Tunnels

▨ Mt. Washington Tunnel Project

— Road Tunnels

PRT Busways

— East Busway

— South Busway

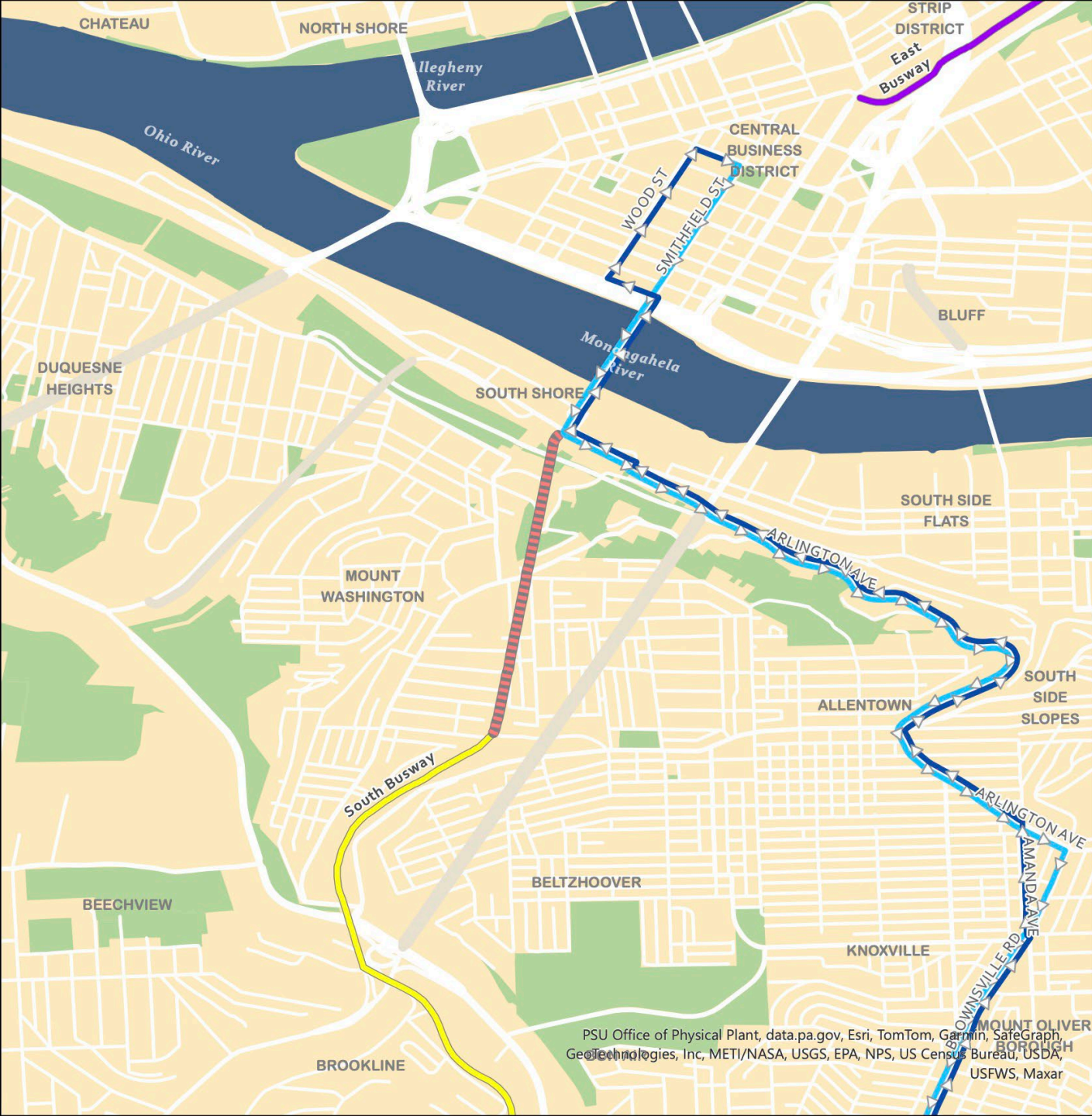
Areas of Interest

■ Parks

P Pittsburgh
R Regional
T Transit



Pittsburgh Regional Transit



PSU Office of Physical Plant, data.pa.gov, Esri, TomTom, Garmin, SafeGraph, GeoTechnologies, Inc., METI/NASA, USGS, EPA, NPS, US Census Bureau, USDA, USFWS, Maxar

Y1: Large Flyer

➤ Inbound

➤ Outbound

Tunnels

▨ Mt. Washington Tunnel Project

— Road Tunnels

PRT Busways

— East Busway

— South Busway

Areas of Interest

— Parks

P Pittsburgh
R Regional
T Transit



Pittsburgh Regional Transit



PSU Office of Physical Plant, data.pa.gov, Esri, TomTom, Garmin, SafeGraph, GeoTechnologies, Inc, METI/NASA, USGS, EPA, NPS, US Census Bureau, USDA, USFWS, Maxar

Y45: Baldwin Manor Flyer

▶ Inbound

▶ Outbound

Tunnels

▨ Mt. Washington Tunnel Project

— Road Tunnels

PRT Busways

— East Busway

— South Busway

Areas of Interest

— Parks



Pittsburgh Regional Transit



P Pittsburgh
R Regional
T Transit

PSU Office of Physical Plant, data.pa.gov, Esri, TomTom, Garmin, SafeGraph, GeoTechnologies, Inc, METI/NASA, USGS, EPA, NPS, US Census Bureau, USDA, USFWS, Maxar

Y46: Elizabeth Flyer

▶ Inbound

▶ Outbound

Tunnels

▨ Mt. Washington Tunnel Project

— Road Tunnels

PRT Busways

— East Busway

— South Busway

Areas of Interest

— Parks

P Pittsburgh
R Regional
T Transit



Pittsburgh Regional Transit



PSU Office of Physical Plant, data.pa.gov, Esri, TomTom, Garmin, SafeGraph, GeoTechnologies, Inc, METI/NASA, USGS, EPA, NPS, US Census Bureau, USDA, USFWS, Maxar

Y47: Curry Flyer

▶ Inbound

▶ Outbound

Tunnels

▨ Mt. Washington Tunnel Project

— Road Tunnels

PRT Busways

— East Busway

— South Busway

Areas of Interest

— Parks

P Pittsburgh
R Regional
T Transit



Pittsburgh Regional Transit



PSU Office of Physical Plant, data.pa.gov, Esri, TomTom, Garmin, SafeGraph, GeoTechnologies, Inc, METI/NASA, USGS, EPA, NPS, US Census Bureau, USDA, USFWS, Maxar

Y49: Prospect Flyer

▶ Inbound

▶ Outbound

Tunnels

▨ Mt. Washington Tunnel Project

— Road Tunnels

PRT Busways

— East Busway

— South Busway

Areas of Interest

■ Parks



Pittsburgh Regional Transit



P Pittsburgh
R Regional
T Transit

Questions?