

The meeting will begin shortly! Thank you for your patience.

Carnegie Park and Ride and Station Improvement Project

Transit-Oriented Communities Program

What is TOD?

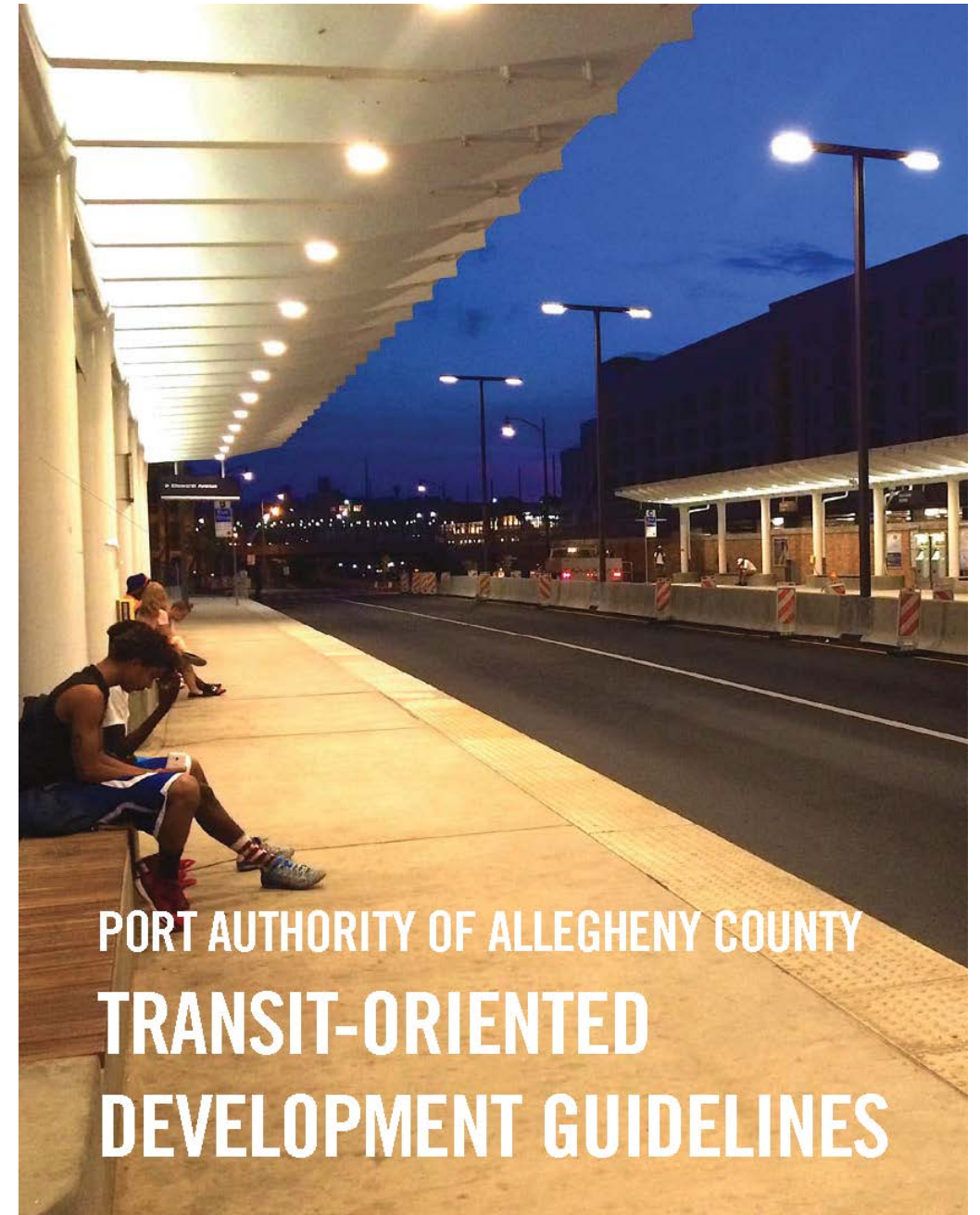
Transit-oriented development is:

- Dense.
- Mixed-use.
- Walkable.
- Close to high-quality transit.



Transit-Oriented Communities Program

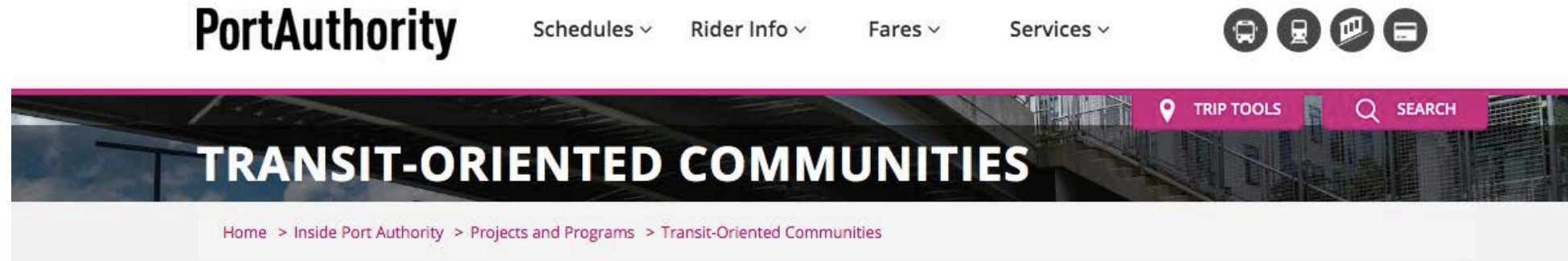
- TOD Guidelines
- TOD Zoning
- First and Last Mile
- Station Improvement Program
- Joint development



PAAC Roles in TOD

- TOD **sponsor** for joint development
- TOD **stakeholder** for any development that occurs within the “zone of influence” of current or future stations
- TOD **advocate** for sustainable land use decisions along all of the Pittsburgh region’s transit corridors

Visit our website for more info!



TOD Guidelines



Station Improvement Program



TOD Zoning Best Practices



First and Last Mile Program

Carnegie Project Website

www.PortAuthority.org/CarnegieStation



[Home](#) > [Inside Port Authority](#) > [Projects and Programs](#) > [Carnegie Station Improvement Project](#)

Port Authority is gathering input from the community to help plan the addition of a new parking garage at Carnegie Station that would add more than 200 parking spaces as part of a transit-oriented development station improvement project.

Please check back with this page to learn about the latest information and opportunities to provide feedback.

Project Plan

The 2010 West Busway Transit-Oriented Development Assessment and Plan called for a new parking garage at Carnegie Station. Additional recommendations included first level retail space, upper floor space for offices for educational and cultural institutions, and new residential units along Logan Street.

Port Authority has secured [Congestion Mitigation and Air Quality Improvement](#)

Projects and Programs

[Carnegie Station Improvement Project](#)

[Transit-Oriented Communities](#)

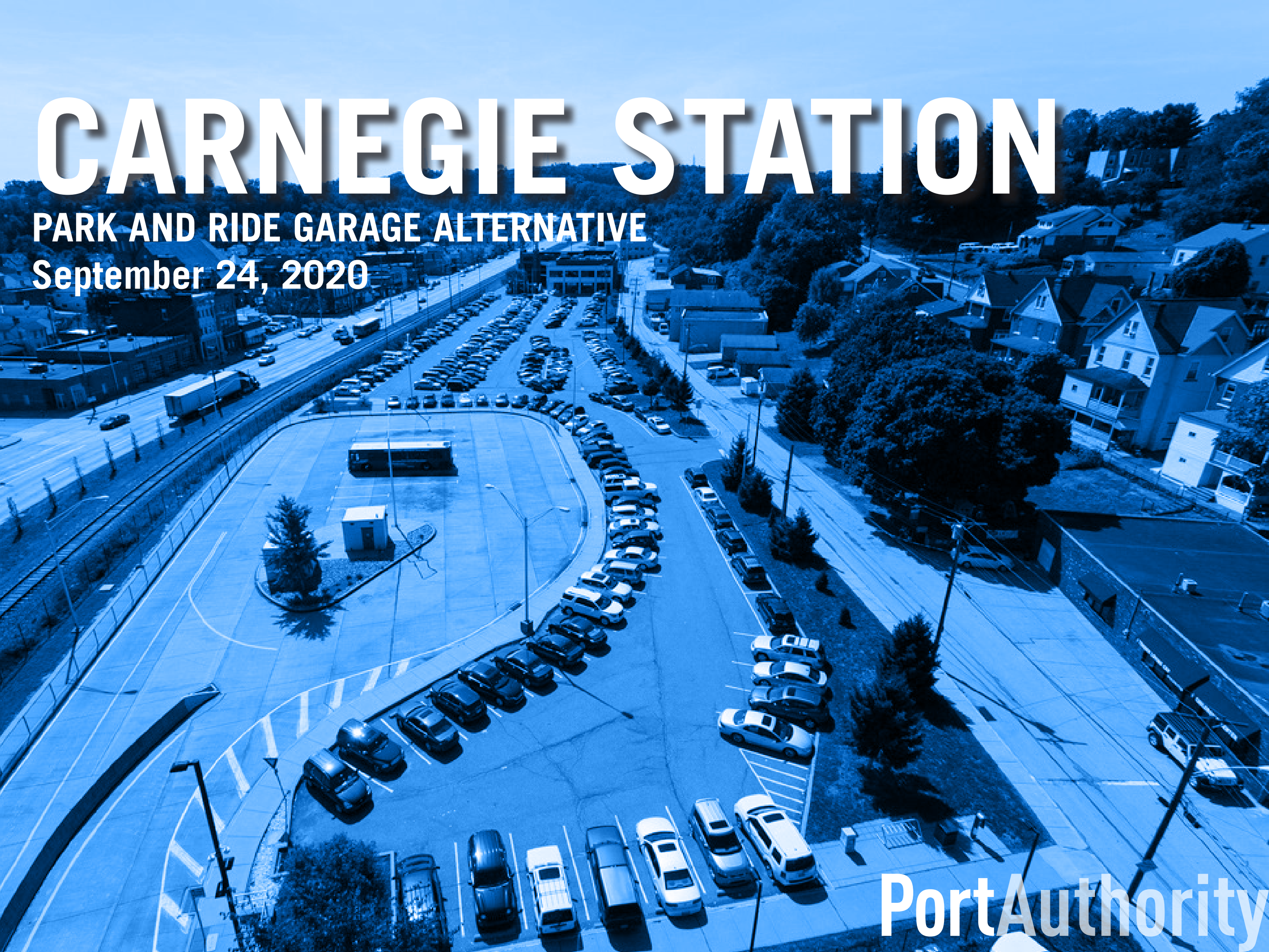
[Bus Stop Consolidation](#)

[Bus Rapid Transit](#)

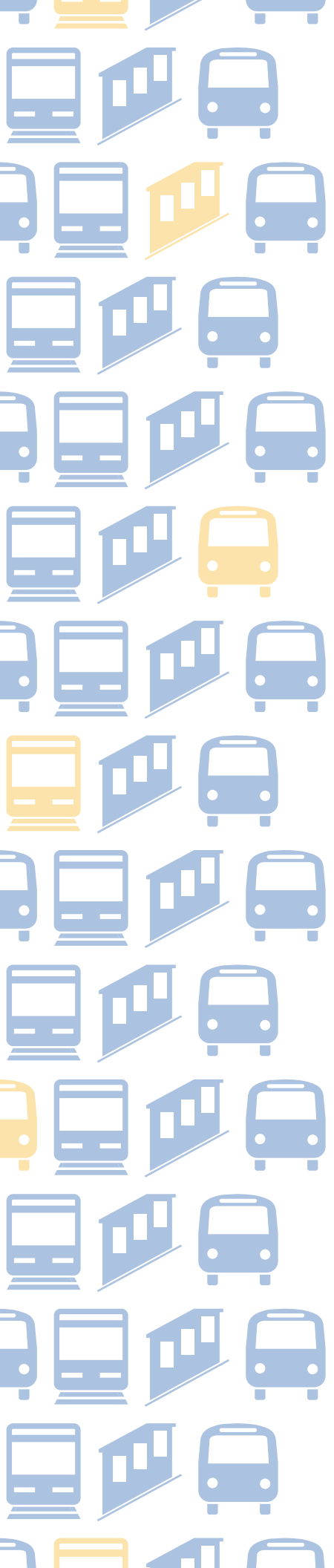
CARNEGIE STATION

PARK AND RIDE GARAGE ALTERNATIVE

September 24, 2020



Port Authority



- 1 Public Feedback Summary**
- 2 Final Concept Master Plan**
- 3 Landscape Plan**
- 4 Summary**
- 5 Statement of Cost**
- 6 Next Steps**

PUBLIC FEEDBACK

SUMMARY

- Initial public comment was derived from borough leaders, and community members through a public meeting on August 24th.
- Afterwards a on-line survey was shared through the Authority's website to collect additional comment, providing an additional 14 responses.

PUBLIC FEEDBACK

	Addressed in Concept	Policy Needed	Future Design Phase
Improved site access (both pedestrian and vehicular)	✓		✓
Building scale to consider surrounding community	✓		✓
Pedestrian safety and comfort (open space, lighting, weather)	✓		✓
Interim TOD site uses (greenspace, community uses)		✓	
Parking structure operations (shared, paid parking)		✓	
Sustainable design (solar panels, personal electric charging, green infrastructure)	✓	✓	✓
Increased traffic volumes on local streets	✓		✓

FINAL CONCEPT MASTER PLAN

STAND ALONE GARAGE: PHASE ONE



LOGAN STREET

QUAKER STATE CONSTRUCTION

OUTBOUND PLATFORM

FUTURE TOD 4-5 STORIES
(APPROX. 70,000+ SQUARE FEET)

INBOUND PLATFORM

PLAZA

PLAZA

PLAZA

PHASE 1

WEST MAIN STREET

3RD STREET

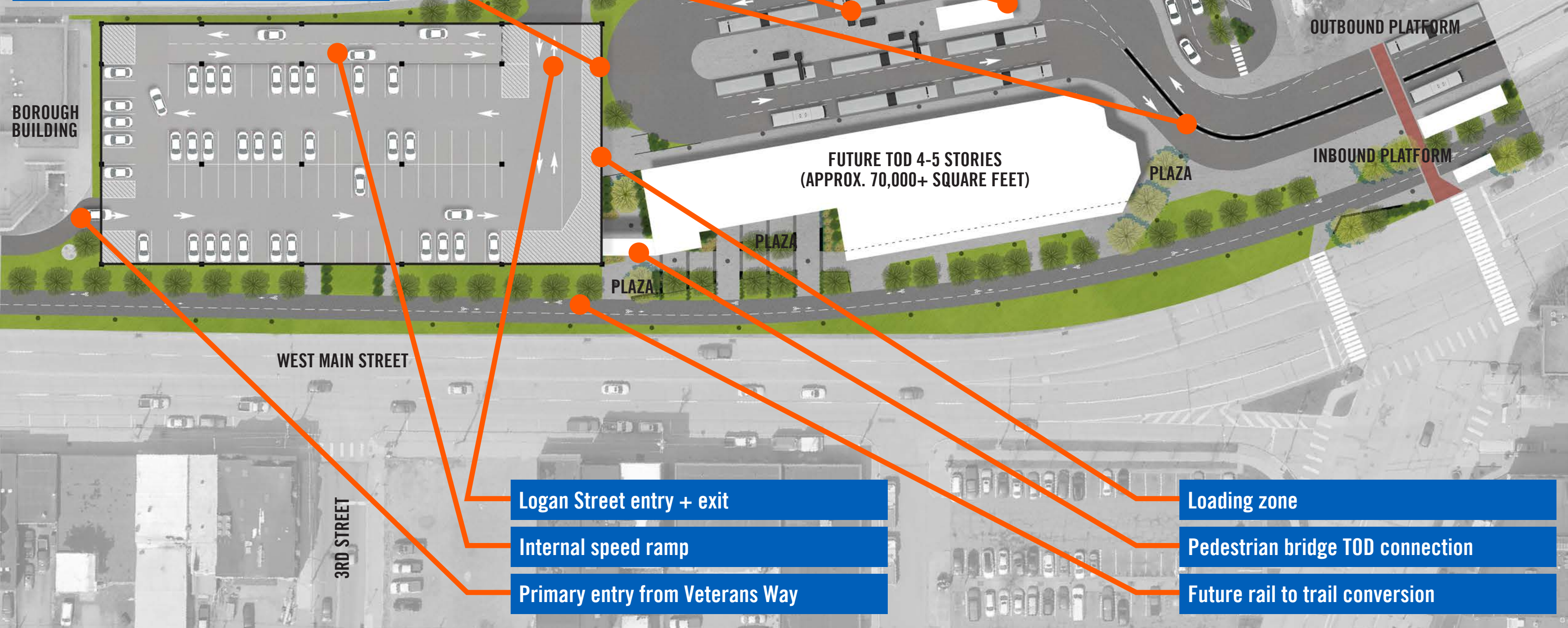
- Garage entry from Veterans Way with an entry/exit from Logan Street (same as existing)
- Garage parking total: 430+/-
- Separate drop-off area
- TOD (4-5 story mixed-use): 70,000+/- square feet
- Pedestrian bridge connection
- Parking + loading may be provided within garage or have access from garage
- Bus loop along Logan Street
- Minimum 10 60' articulated buses
- Maximum 15 60' + 40' articulated buses
- Includes infrastructure for future charging stations within island
- Driver facilities in island

BOROUGH BUILDING

FINAL CONCEPT MASTER PLAN

STAND ALONE GARAGE: PHASE ONE

- ADA parking + drop off area
- 10-15 Bus layover spaces
- Driver facilities
- Future bus charging stations
- Concrete barrier divider
- Vegetative buffer



Logan Street entry + exit

Internal speed ramp

Primary entry from Veterans Way

Loading zone

Pedestrian bridge TOD connection

Future rail to trail conversion

FINAL CONCEPT MASTER PLAN

STAND ALONE GARAGE: PHASE TWO

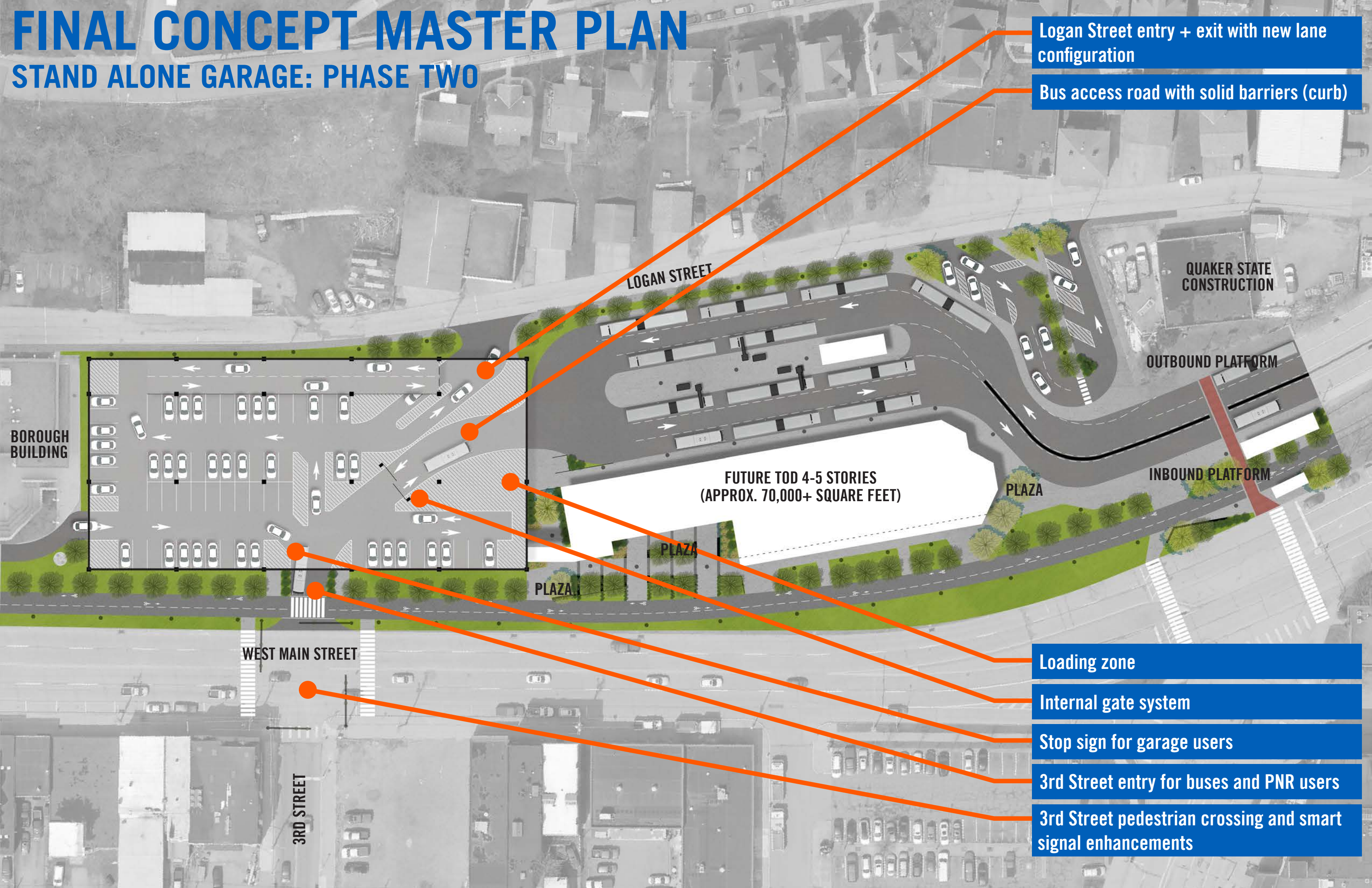


- Connect bus loop to garage and 3rd Street access
- Additional entry and exit point for all vehicles
- Minimal infrastructure changes to accomplish Phase 2
- Re-striping of garage ground floor
- Curb realignment at bus loop
- Solid barrier along bus access road
- Garage parking total: 405+/- (10'x20' spaces used for planning purposes - 8.5'x20' is acceptable for garage development)
- Future TOD loading zone access changes

PHASE 2

FINAL CONCEPT MASTER PLAN

STAND ALONE GARAGE: PHASE TWO



Logan Street entry + exit with new lane configuration

Bus access road with solid barriers (curb)

LOGAN STREET

QUAKER STATE CONSTRUCTION

OUTBOUND PLATFORM

FUTURE TOD 4-5 STORIES
(APPROX. 70,000+ SQUARE FEET)

PLAZA

INBOUND PLATFORM

BOROUGH BUILDING

PLAZA

PLAZA

WEST MAIN STREET

Loading zone

Internal gate system

Stop sign for garage users

3rd Street entry for buses and PNR users

3rd Street pedestrian crossing and smart signal enhancements

3RD STREET

CARNEGIE STATION PARK AND RIDE

CONCEPT RENDERINGS: VIEW A



LOGAN STREET

QUAKER STATE CONSTRUCTION

OUTBOUND PLATFORM

FUTURE TOD 4-5 STORIES
(APPROX. 70,000+ SQUARE FEET)

INBOUND PLATFORM

PLAZA

PLAZA

PLAZA

WEST MAIN STREET

A

3RD STREET

BOROUGH BUILDING



PARKING

CARNEGIE

CARNEGIE STATION PARK AND RIDE

CONCEPT RENDERINGS: VIEW B



B

LOGAN STREET

QUAKER STATE CONSTRUCTION

OUTBOUND PLATFORM

FUTURE TOD 4-5 STORIES
(APPROX. 70,000+ SQUARE FEET)

INBOUND PLATFORM

PLAZA

PLAZA

PLAZA

WEST MAIN STREET

3RD STREET

BOROUGH BUILDING



LANDSCAPE PLAN

PLANTING PLAN



TOD SUGGESTED PLANTING PLAN DESIGN
(NOT TO BE INCLUDED IN PORT
AUTHORITY CONTRACT)

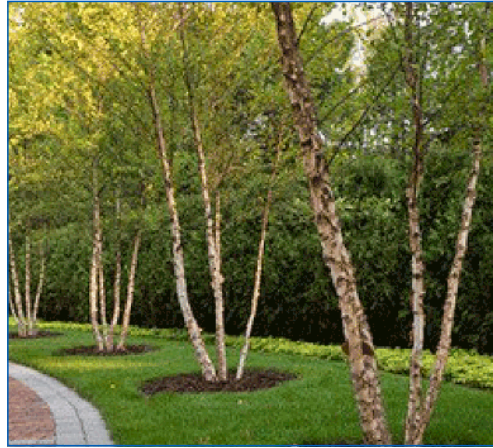
LANDSCAPE PLAN

PLANTING PLAN

STREET + AREA TREES



Acer griseum
Paperbark Maple



Betula nigra
River Birch



Zelkova serrata
Japanese Zelkova

SHRUBS + GRASSES



Taxus x media 'Densiformis'
Densiformis Spreading Yew

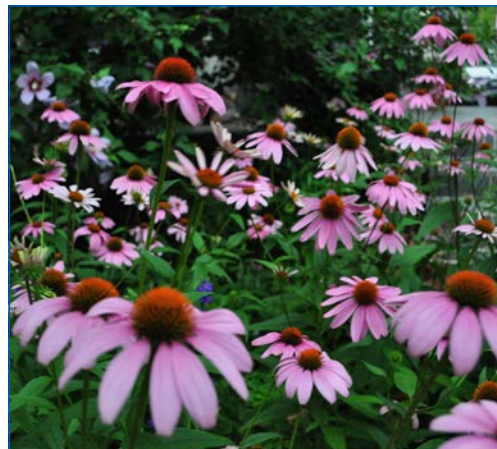


Cornus alba 'Sibirica'
Red Twig Dogwood



Miscanthus sinensis 'Gracillimus'
Miscanthus

HERBACEOUS PLANTS



Echinacea pupurea 'White Swan'
Purple Coneflower



Rudbeckia fulgida var sullivatii 'Goldstrum'
Black-Eyed Susan



Lobelia siphilitica
Great Blue Lobelia

Plant Schedule Recommendations

Qty.	Key	Botanical Name	Common Name	Size	Comments
- Trees -					
12	A.g.	<i>Acer griseum</i>	Paperbark Maple	2" cal. B&B	Disease free
5	B.n.	<i>Betula nigra</i>	River Birch	2-1/2" cal. B&B	Clump Form
30	Z.s.	<i>Zelkova serrata</i>	Japanese Zelkova	2-1/2" cal. B&B	Disease free
- Shrubs and Grasses -					
9	C.s.	<i>Cornus alba 'Sibirica'</i>	Red Twig Dogwood	#5 Cont.	As shown on plans
9	M.s.	<i>Miscanthus sinensis 'Gracillimus'</i>	Miscanthus	#2 Cont.	As shown on plans
38	T.m.	<i>Taxus x media 'Densiformis'</i>	Densiformis Spreading Yew	36" B&B	As shown on plans
- Herbaceous Plants -					
190	E.p.	<i>Echinacea pupurea "White Swan"</i>	Purple Coneflower	#1 Cont.	18" O.C.
1,140	L.s.	<i>Lobelia siphilitica</i>	Great Blue Lobelia	#1 Cont.	12" O.C.
16	R.f.	<i>Rudbeckia fulgida var sullivatii 'Goldstrum'</i>	Black-Eyed Susan	#1 Cont.	18" O.C.

CARNEGIE STATION PARK AND RIDE

SUMMARY

Phase One: total parking spaces	434
Phase Two: total parking spaces	416
Bike parking facilities	80
Pick up drop off zone (linear feet)	90
Drop off distance to station platform (minutes)	0.30
Bus layover spaces	10-15
Vehicular access points (total)	3-4
Active frontage Potential TOD frontage: 330' Garage frontage: 300' Total: 630'	52%

CARNEGIE STATION PARK AND RIDE

STATEMENT OF COST

FUNDING SOURCES

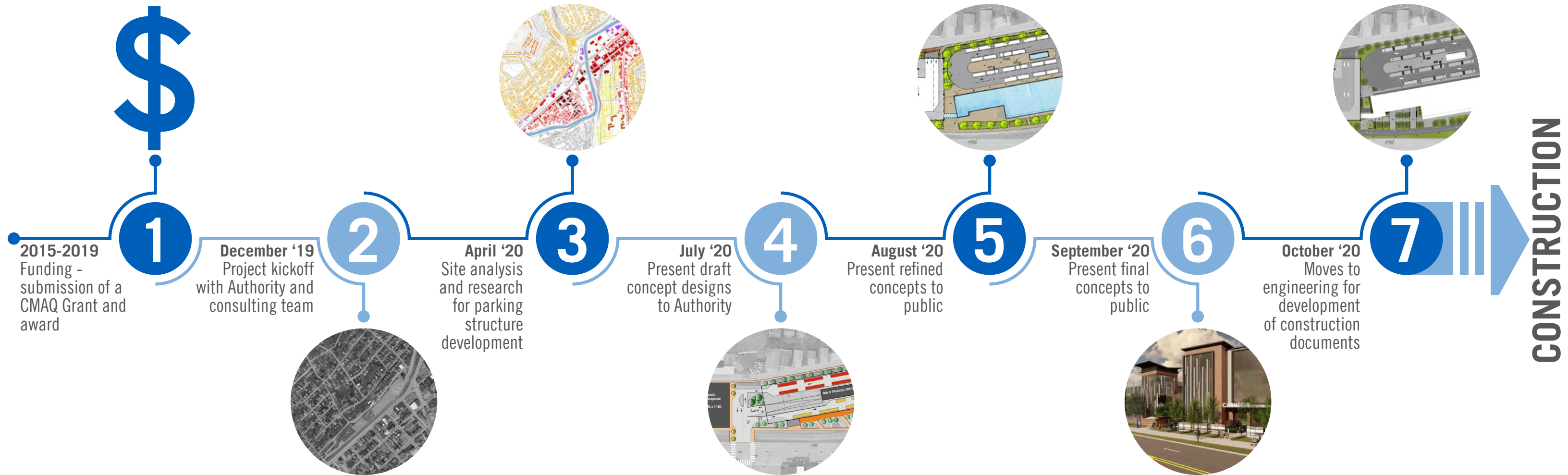
Congestion Mitigation and Air Quality (CMAQ) <i>Grant Funds</i>	\$6.5 M
State Transit and Other Government sources <i>Matching Funds</i>	\$6.5 M
Total funds available	\$13 M

COST ESTIMATE

- An initial cost estimate has determined that the Carnegie park and ride parking structure and site enhancements should work within the project budget amount of **\$13 million**.
- This estimate was developed using a ‘basic’ level of construction, and a more detailed estimate will be derived once the plans are advanced beyond conceptual (10%) design.

CARNEGIE STATION PARK AND RIDE

NEXT STEPS



QUESTIONS

CARNEGIE PARK AND RIDE GARAGE ALTERNATIVE

September 24, 2020

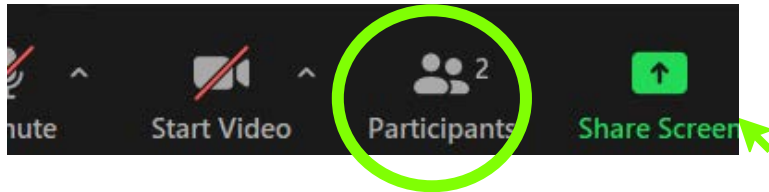


Port Authority

Raising your hand in Zoom

By desktop/laptop:

1. Click “Participants” on the Zoom Menu Bar at the bottom of the Zoom window.



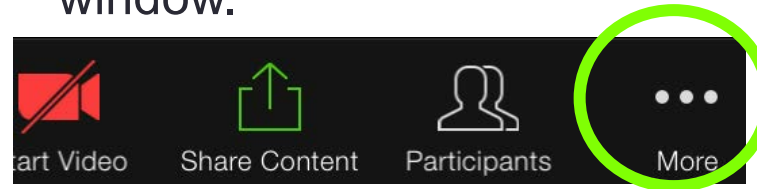
2. A white “Participants” box will open. At the bottom of this screen, click, “Raise Hand.”



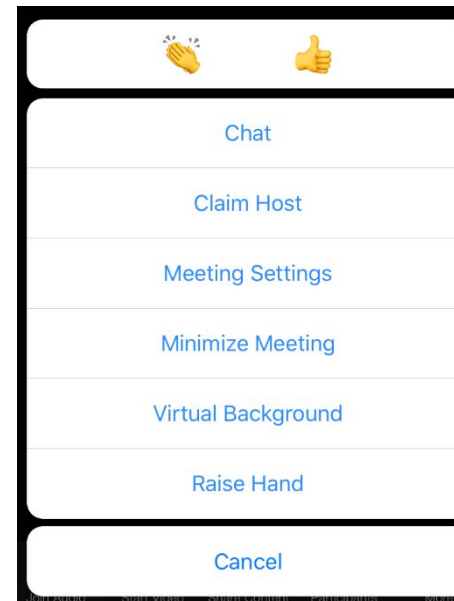
Invite Unmute Me **Raise Hand**

By IOS/Android:

1. Click “More” on the Zoom Menu Bar at the bottom of the Zoom window.



2. Choose “raise hand”



By telephone:

1. *6 to mute/unmute
2. *9 to raise hand